



# SWING DOORS

K2 Swing doors are New Zealand made and the best swing doors in the market with various door leaf options and sizing there will be something to suit your project.



K2 Swing doors are an excellent option for high traffic and service areas where ease of door opening is required. They are extremely robust and durable and are virtually maintenance free. For the ultimate in double swing doors, you can't look past these doors.

## Applications

- Restaurants
- Processing Factories
- Supermarkets
- Kitchens
- Warehouses
- Retail
- Hospitals
- Service Areas

## Door Leaf Options

- HDPE (High-Density Polyethylene) 15mm thick. These doors are well suited for food handling situations where a high level of hygiene level is required. Max door size 3000mm x 1500mm. Other materials such as UHMWPE and HMWPE are available on request.
- K2 Panel - 40mm thick composite aluminum door. Max size 3600mm x 1500mm.
- K2 GRP - 40mm thick maximum size 3000mm x 1500mm.
- Timber - 40mm thick 3000mm x 1200mm.

## Hinges

K2 Swing door hinges are a double action swing hinge constructed of stainless steel and Delrin. These hinges are extremely robust and durable. All of the components are corrosion resistant. The hinges are available with a hold open option if required.

## Door Bumpers

Door bumpers 220mm high UHMWPE. Stainless steel kick plates are also available.

## Full Service

Here at K2 Doors, we stand by our service and that's why our clients keep coming back to us. We can help you with the design process right through to the installation of your doors by our fully trained and experienced team.



# SWING DOORS

K2 doors are New Zealand made, and we know how the building industry operates and how rapid changes can occur when onsite. If required we can assist in a matter of days and produce extra frames and doors to complete your project.

## Frame Profiles

K2 doors offer over 30 different stainless steel frames profiles. If we don't have a profile that suits your requirements we can custom make one for you. We can offer other options which include aluminum, powder coated steel or timber.

## Door Design

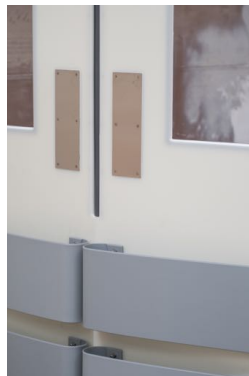
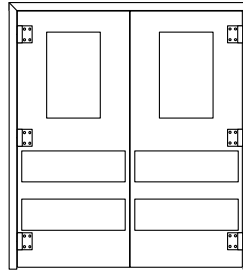
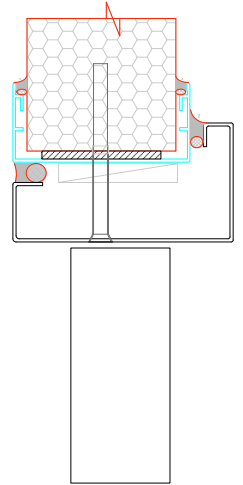
The team at K2 Doors have been designing industry-leading doors for 20 years. We understand that every job is unique and your requirements may be different from other projects, that's where our experience and knowledge can assist you with coming up with the correct solution. Our service includes going through every detail from frames to door leaves hardware, and installation to ensure we cover everything you require for your project.

## Hardware

At K2 Doors we use only the highest quality hardware. We can fit hardware in the factory or onsite. From full stainless steel hardware to door grilles and door seals.

## Glazing

We can offer single glazed vision panels or double/triple glazed flush panel options. We can use either glass or polycarbonate.



## Contact

K2 Doors / J.E Dennison LTD  
5 Redruth Street  
Redruth Industrial Park  
Timaru  
7910  
New Zealand

Call (+64) 3 6880029  
Email [k2doors@jedennison.co.nz](mailto:k2doors@jedennison.co.nz)  
Web [www.k2doors.co.nz](http://www.k2doors.co.nz)

