



GRP HYGIENIC DOORS

K2 Hygienic doors are a glass reinforced polyester (GRP) moulded door that are used in areas where the highest levels of hygiene are required.



When it comes to GRP hygienic doors, quality and trust should never be compromised, working with a professional is essential and with over 20 years experience and a real focus on customer satisfaction. You can trust K2 Doors to deliver.

Applications

- Laboratories
- Dairy Factories
- Hospitals
- Research Facilities
- Pharmaceutical
- Clean Rooms
- Food Processing Plants
- Infant Formula Plants
- Fire Doors

Finish

K2 GRP Hygienic doors are an encapsulated moulded door. The finish on the door face is gel coat which is available in over 70 different colours.

Customize

At K2 Doors we understand each project is different and your needs may vary from other clients, we can customize your door to suit your budget and project requirements, which includes various core options, vision panel details, frame designs and hardware options.

Size

All our GRP Hygienic doors are custom made, from small 200mm x 200mm access hatches to large 6000mm x 2400mm door leafs.

Durability

K2 GRP Hygienic doors have proven themselves in the industry for 20 years in some of the harshest and most testing environments.

Fire Rating

We offer a range of fire doors to suit what you require from smoke doors -/-SM up to -/60/60SM.

Full Service

Here at K2 Doors, we stand by our service and that's why our clients keep coming back to us. We can help you with the design process right through to the installation of your doors by our fully trained and experienced team.



GRP HYGIENIC DOORS

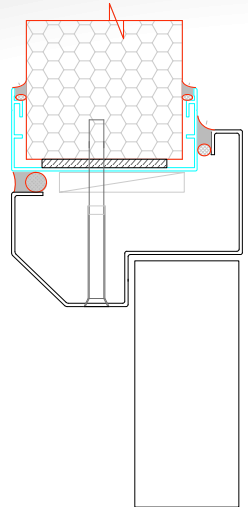
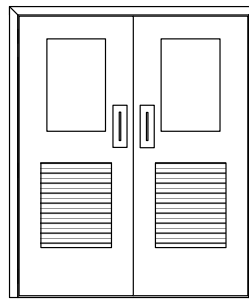
K2 doors are New Zealand made, and we know how the building industry operates and how rapid changes can occur when onsite. If required we can assist in a matter of days and produce extra frames and doors to complete your project.

Frame Profiles

K2 doors offer over 30 different stainless steel frames profiles. If we don't have a profile that suits your requirements we can custom make one for you. We can offer other options which include aluminum, powder coated steel or timber.

Door Design

The team at K2 Doors have been designing industry-leading doors for 20 years. We understand that every job is unique and your requirements may be different from other projects, that's where our experience and knowledge can assist you with coming up with the correct solution. Our service includes going through every detail from frames to door leafs hardware, and installation to ensure we cover everything you require for your project.



Hardware

At K2 Doors we use only the highest quality hardware. We can fit hardware in the factory or onsite. From full stainless steel hardware to door grilles and door seals.



Glazing

We can offer single glazed vision panels or double/triple glazed flush panel options. We can use either glass or polycarbonate.



Contact

K2 Doors / J.E Dennison LTD
5 Redruth Street
Redruth Industrial Park
Timaru
7910
New Zealand

Call (+64) 3 6880029

Email k2doors@jedennison.co.nz

Web www.k2doors.co.nz

